

Moisture Control

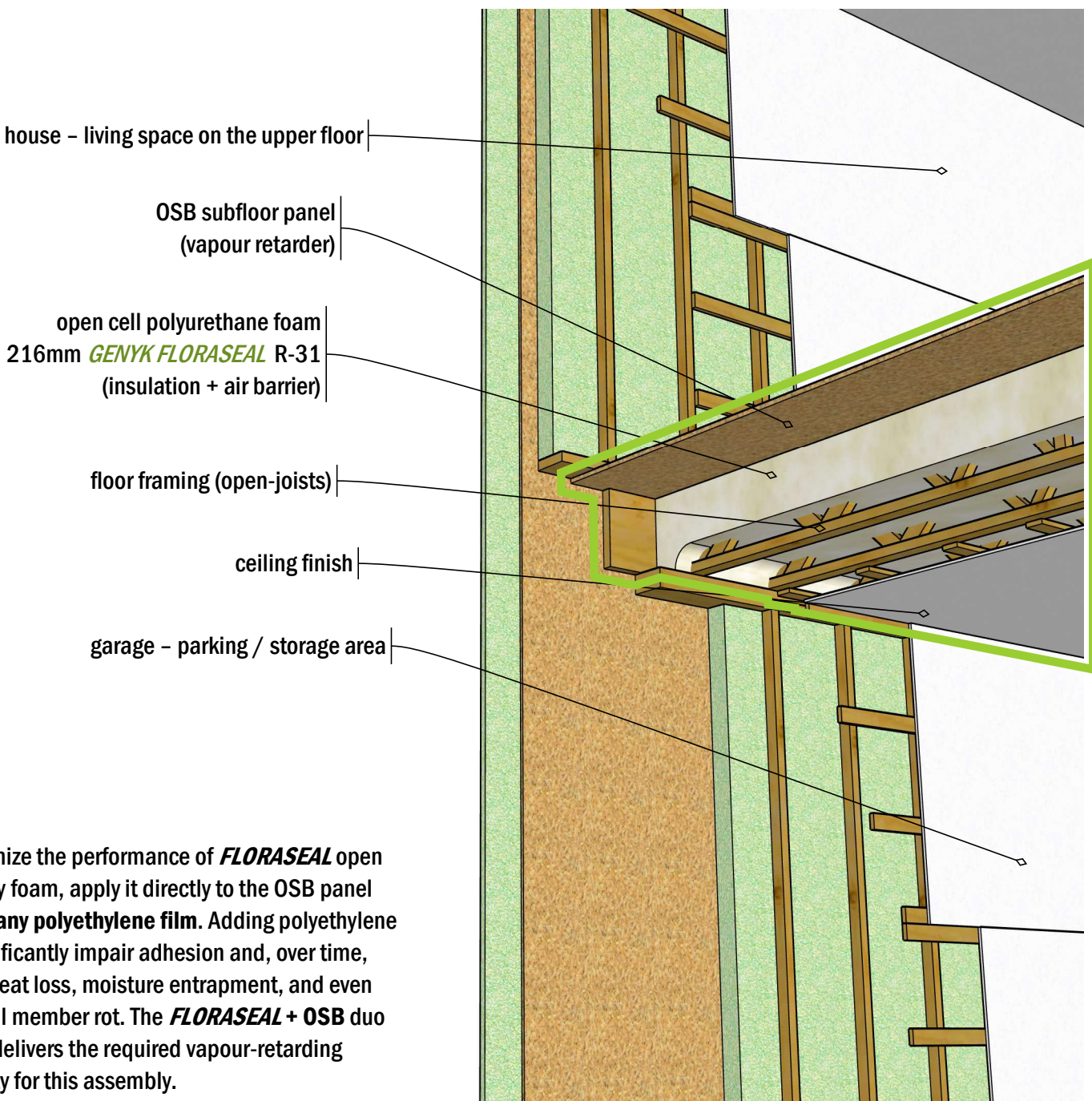
Preserve your structures: halts vapour, prevents mold, and avoids deterioration.

High-Performance Insulation

Durable insulation, year-round comfort, and lower energy expenses.

Ultra-Efficient Air Barrier

Say goodbye to infiltration: perfect sealing for an optimized building performance.



NOTE

To maximize the performance of **FLORASEAL** open cell spray foam, apply it directly to the OSB panel **without any polyethylene film**. Adding polyethylene can significantly impair adhesion and, over time, lead to heat loss, moisture entrapment, and even structural member rot. The **FLORASEAL + OSB** duo already delivers the required vapour-retarding capability for this assembly.

+ please ensure compliance with local authority regulations concerning the R-values & the vapour barrier of the assemblies

LEGEND

- FLORASEAL (open cell)
- BOREAL ELITE (closed cell)

PIERRE-LUC ST-LOUIS - Building Science Technician

DATE

May 5th, 2025

REV #

REV-0

**PROUDLY
CANADIAN.**