



PROUDLY CANADIAN

GENYK

Polyurethane



1 HOUR RATING
INSULATION AND FIREPROOFING



BOREAL NATURE
ELITE

**ICC-ES listing Report #ESL-1577 is based on testing requirements outlined in the
National Building Code of Canada – Volume 1-Division B: 3.1.7.1 and 3.1.7.2.**

1. Perimeter Framing Members - Minimum 16-gauge thick steel members with minimum 101.6 mm by 50.8 mm legs are used as perimeter framing for the wall assembly. The perimeter framing members are oriented to allow for wall sheathing attachment and secured to each other using minimum two 12.7mm long No.8 pan head self drilling screws at each corner

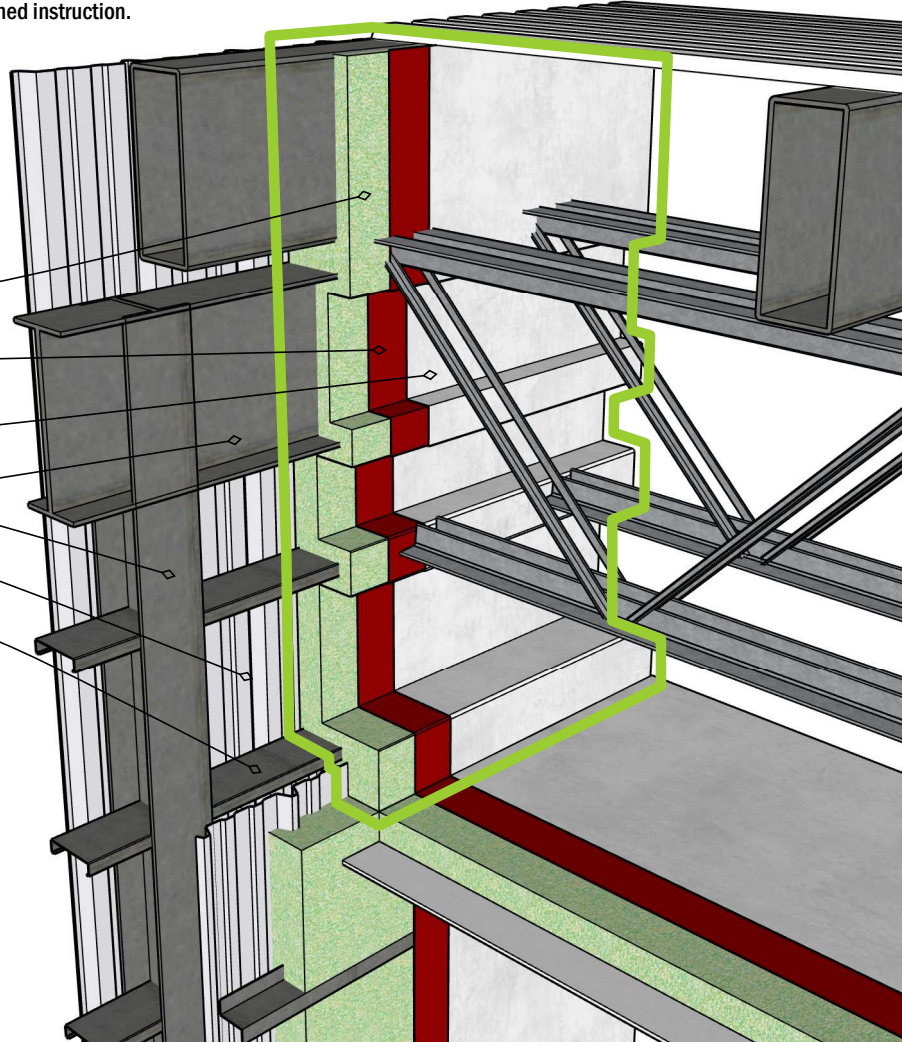
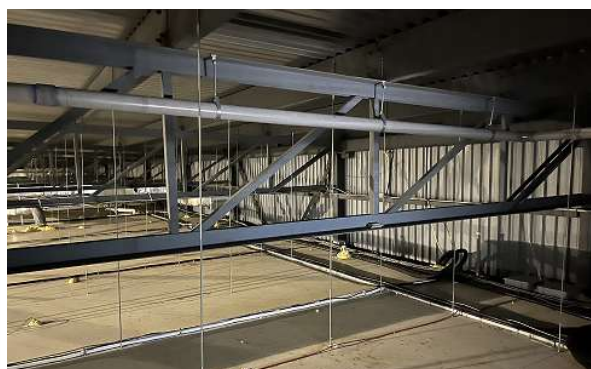
2. Wall Sheathing (Unexposed Face) - Minimum 26-gauge thick and 914.4 mm wide commercial grade steel R-panels with 31.8 mm deep ribs must be installed vertically with panels seams overlapping in accordance with the manufacturer's published installation instructions. Panels must be secured to each other along the vertical overlapping seam using 25.4 mm long No.12 external hex washer head self-drilling screws spaced at a maximum of 406.4 mm on center vertically. Panels are secured to the perimeter framing member using 25.4 mm long No.12 external hex washer head self-drilling screws spaced at a maximum of 406.4 mm on center around the perimeter of the wall assembly. Panels must be secured to the intermediate supports framing using 38.1 mm long No. 12 - 14 external hex washer head self-drilling screws spaced at a maximum of 304.8 mm on center horizontally along each intermediate support framing member.

3. Intermediate Support Framing - Intermediate wall framing members consist of minimum 16-gauge thick, 101.6 mm deep Z- or C- grits with 50.8 mm legs installed horizontally and spaced at a maximum of 1219.2 mm on center. The intermediate support framing members are secured to the perimeter framing members using minimum two 12.7 mm long No. 8 pan head self-drilling screws at each end.

4. Insulation - GENYK Boreal Nature Elite (Closed-Cell) spray-applied polyurethane foam (SPF) insulation, with a reported density of 32.04 kg/m³, must be applied at a nominal thickness of 101.6 mm between the intermediate support framing members, applied directly to the fire exposed face of the wall sheathing. SPF insulation must also be applied to the intermediate support framing members at a nominal thickness of 38.1 mm matching the contour of the Z- or C- grits. Application must be in accordance with the manufacturer's published instruction.

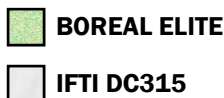
5. Intumescent Coating (Exposed Face) -
International Fireproof Technology Inc. DC315 intumescent coating must be applied over the exposed surface of the spray foam insulation at a minimum 0.61 mm (24 mils) dry film thickness (DFT) on the fire exposed face of the wall assembly. Application must be in accordance with the manufacturer's published instructions.

- #4. spray foam polyurethane
BOREAL ELITE 101.6mm by 50mm
- Primer's recommended to ensure
adhesion of the intumescent coating
- #5. intumescent coating **DC315**
36 mils wet film (24 mils dry film)
- #1. framing member
- #2. wall steel sheathing commercial
grade steel panels
- #3. intermediate support framing,
Z-bars or C-channel



✦ please ensure compliance with local authority regulations concerning the R-values & the vapour barrier of the assemblies

LEGEND



PIERRE-LUC ST-LOUIS - Building Science Technician

DATE

May 6th, 2025

REV #

REV-1

